

THE MOST RELIABLE BLOOD TYPING TEST ON THE MARKET

LabTEST_{BT} TECHNOLOGY

FOR CANINE & FELINE BLOOD TYPING

DEA 1 BLOOD GROUP (DEA 1.1 & DEA 1.2) IN DOGS
A & B BLOOD GROUPS IN CATS

NEW SCIENTIFIC DATA:
DETECTS WEAK DEA 1
(FORMER DEA 1.2)



THE FIRST IMMUNO-CHROMATOGRAPHY TECHNOLOGY

LabTEST_{BT} MATERIAL

FOR DETERMINATION OF DEA 1 BLOOD TYPES IN DOGS
& A/B BLOOD TYPES IN CATS

1 BOX OF LAB TEST CONTAINS:

- 1 TUBE WITH 20 MEMBRANES
(1 MEMBRANE = 1 DETERMINATION)
- 1 DROPPER BOTTLE OF BUFFER
OF 5ML
- 20 RESULTS FORMS WITH
SCHEMATIC TEST MANUALS



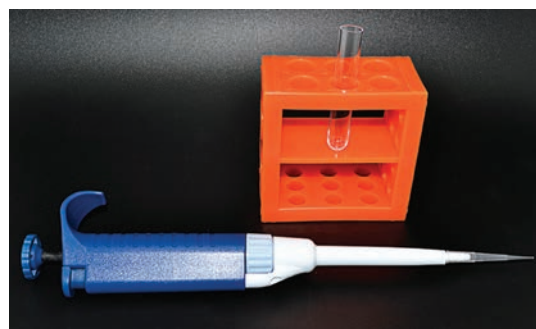
SAME MATERIAL PROVIDED FOR BOTH
FELINE & **CANINE** LAB TEST

ADDITIONAL MATERIAL NEEDED:

- 20 CLEAN TEST TUBES (5ML)
- 1 PIPETTE WITH TIPS

OPTION: COMPLEMENTARY MATERIAL CAN BE
PURCHASED FROM ALVEDIA

- 20 BLOOD COLLECTOR STRIPS
- 20 CLEAN TEST TUBES



10 µl of blood
2 minutes



Quick
Easy to use
Clean
Accurate
Archivable

LabTEST_{BT} PROCEDURE

STEP 1



TAKE 1 MEMBRANE OUT OF THE WHITE TUBE OR MORE IF YOU NEED TO BLOOD TYPE SEVERAL DOGS.

STEP 2



ADD 3 DROPS OF BUFFER INTO THE CLEAN TEST TUBE.

STEP 3



COLLECT 10 μ L OF WHOLE BLOOD WITH A PIPETTE.

STEP 4



ADD THE 10 μ L OF BLOOD INTO THE TUBE FILLED OF BUFFER AND MIX GENTLY.

STEP 5



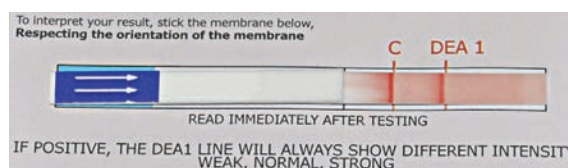
INSERT THE MEMBRANE INTO THE WELL TO ALLOW THE MIGRATION.

STEP 6



WAIT FOR THE COMPLETE MIGRATION UNTIL THE CONTROL LINE BECOMES VISIBLE.

STEP 7



STICK THE MEMBRANE ON THE RESULT FORM TO INTERPRET THE RESULT.

EXAMPLE: IF YOU OBTAIN A LINE IN FRONT OF THE DEA 1, THE DOG IS DEA 1 POSITIVE.

RECORD THIS FORM.

LabTEST_{BT} RESULTS

THE DOG
IS DEA 1 -



ABSENCE OF RED LINE IN FRONT OF «DEA 1» ARROW INDICATES A **NEGATIVE REACTION**.

THE DOG
IS WEAK DEA 1 +



PRESENCE OF A **WEAK** RED LINE IN FRONT OF «DEA 1» INDICATES A **POSITIVE REACTION**.

THE DOG
IS DEA 1 +



PRESENCE OF RED LINE IN FRONT OF «DEA 1» INDICATES A **POSITIVE REACTION**.

THE CAT
IS A GROUP



PRESENCE OF RED LINE IN FRONT OF "A" ARROW INDICATES A **POSITIVE REACTION FOR A GROUP**.

THE CAT
IS B GROUP



PRESENCE OF RED LINE IN FRONT OF "B" ARROW INDICATES A **POSITIVE REACTION FOR B GROUP**.

THE CAT
IS AB GROUP



PRESENCE OF 2 RED LINES IN FRONT OF "A" AND "B" ARROW INDICATES A **POSITIVE REACTION FOR BOTH A AND B GROUP**.

IMPORTANCE OF BLOOD TYPING

CANINE

THE DETERMINATION OF DEA 1 ANTIGEN IS STRONGLY RECOMMENDED BEFORE ANY BLOOD TRANSFUSION TO AVOID A POTENT ALLOANTIBODY RESPONSE AGAINST THIS ANTIGEN AND TO AVOID ACUTE HAEMOLYTIC TRANSFUSION REACTION.



FELINE

THE PRESENCE OF NATURALLY OCCURRING ALLO ANTIBODIES IN TYPE A AND IN TYPE B CATS REQUIRES THAT BLOOD TYPING MUST BE PERFORMED PRIOR TO BLOOD TRANSFUSION TO AVOID ACUTE HAEMOLYTIC TRANSFUSION REACTION, AND IN BREEDINGS TO PREVENT NEONATAL ISOERYTHROLYSIS. BLOOD CAN BE TAKEN DIRECTLY FROM THE UMBILICAL CORD.



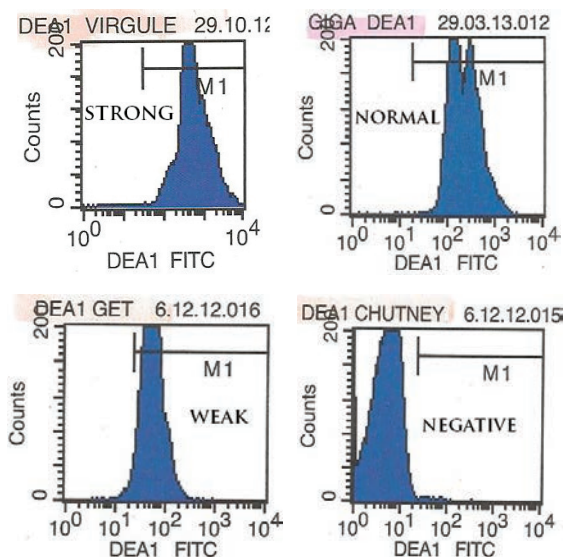
LabTEST SCIENTIFIC INFORMATION

THE DEA 1 ANTIGEN

ALVEDIA'S SCIENTIFIC TEAM ESTABLISHED THAT DEA 1 ANTIGEN PRESENTS A LARGE RANGE OF EXPRESSION LEVEL ON THE RBC SURFACE BY USING FLOW CYTOMETER TECHNOLOGY. SIMILARLY TO THE RHESUS D MOLECULE IN HUMAN (NAMED WEAK D OR DU), SOME DOGS EXPRESS LOW LEVEL OF DEA 1 ANTIGEN (CALLED WEAK DEA 1). THIS WORK SHOWS THAT THE WEAK DEA 1 WERE PREVIOUSLY TYPED AS DEA 1.2. A LARGE STUDY ON MORE THAN 500 DOGS SHOWS THAT OUR MEMBRANE TECHNOLOGY DETECTS PERFECTLY ALL RANGE OF DEA 1 ANTIGEN EXPRESSION FROM VERY STRONG TO VERY WEAK. CONSEQUENTLY, THE DEA 1 LINE WILL ALWAYS SHOW DIFFERENT INTENSITIES.



EXAMPLE OF DEA 1 BLOOD TYPING POSITIVE RESULTS WITH DIFFERENT INTENSITIES USING OUR LABTEST TECHNOLOGY



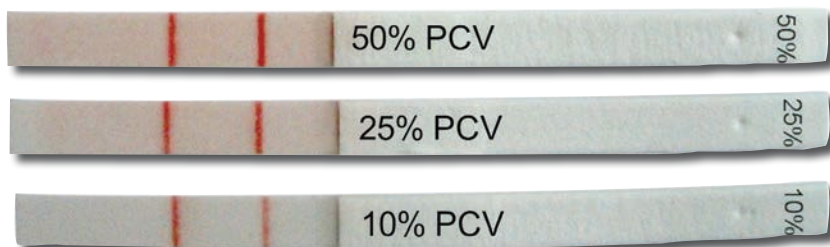
EXAMPLE OF DEA 1 BLOOD TYPING RESULTS WITH DIFFERENT INTENSITIES USING FLOW CYTOMETER ANALYSER

RELIABLE IN CASE OF AUTO-AGGLUTINATION

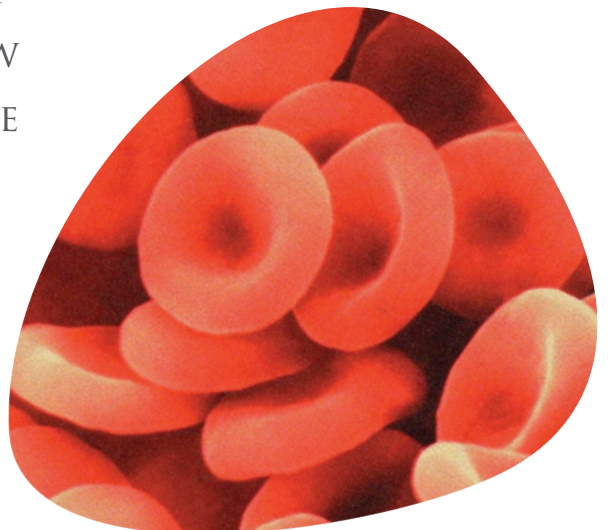


THANKS TO OUR SPECIFIC MEMBRANE TECHNOLOGY, THE AGGLUTINATED RED BLOOD CELLS WILL BE RETAINED AT THE BOTTOM OF THE MEMBRANE WHEREAS NON AGGLUTINATED RBC WILL CARRY ON MIGRATING UNTIL THE TOP OF THE MEMBRANE.

RELIABLE IN CASE OF LOW PCV (ANEMIA)



THANKS TO THE SENSITIVITY OF OUR SPECIFIC MONOCLONAL ANTIBODIES, EVEN A LOW PCV WILL ALLOW YOU TO OBTAIN A RELIABLE BLOOD TYPING.



ALL YOU NEED FOR A SAFE TRANSFUSION



CONTACT US:

ALVEDIA

11-13 RUE DES AULNES

69760 LIMONEST - FRANCE

TEL: +33(0)478 380 239

FAX: +33(0)478 939 563

E-MAIL: CONTACT@ALVEDIAVET.COM

WWW.ALVEDIA.COM