

THE MOST RELIABLE BLOOD TYPING TEST ON THE MARKET

# QuickTEST<sub>BT</sub> TECHNOLOGY

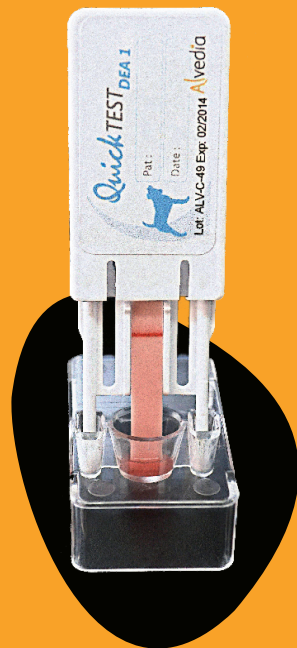
FOR CANINE & FELINE BLOOD TYPING

DEA 1 BLOOD GROUP (DEA 1.1 & DEA 1.2) IN DOGS  
A & B BLOOD GROUPS IN CATS



NEW SCIENTIFIC DATA:  
**DETECTS WEAK DEA 1**  
(FORMER DEA 1.2)

- QUICK
- EASY TO USE
- CLEAN
- RELIABLE
- ARCHIVABLE
- 100% SPECIFICITY



THE FIRST IMMUNO-CHROMATOGRAPHY TECHNOLOGY

# QuickTEST<sub>BT</sub> MATERIAL

FOR DETERMINATION OF DEA 1 (DEA 1.1 & DEA 1.2) BLOOD TYPES IN DOGS AND A/B BLOOD TYPES IN CATS

## 1 QUICK TEST PACKAGE CONTAINS:

- 1 PLASTIC DEVICE WITH MEMBRANE DIPSTICK
- 1 EMPTY WELL
- 1 BUFFER SOLUTION
- 1 BLOOD COLLECTOR STRIP
- 1 SCHEMATIC TEST MANUAL



# QuickTEST<sub>BT</sub> PROCEDURE

1 Alvedia Blood Typing Quick Test + 1 drop of blood + 2 minutes

## STEP 1



WRITE DOWN THE NAME OF THE PATIENT AND THE DATE.

## STEP 2



ADD 3 DROPS OF BUFFER INTO THE WELL.

## STEP 3



DIP THE BLOOD COLLECTOR STRIP INTO THE BLOOD TUBE OR RUB IT DIRECTLY ON THE DROP OF BLOOD. THE EXTREMITY MUST BE FULLY RED.

## STEP 4



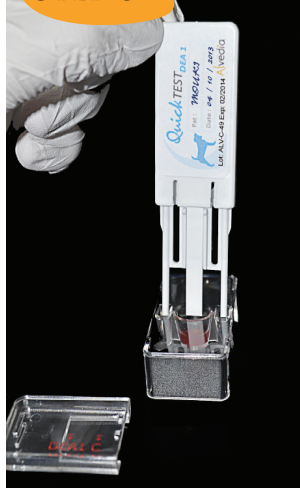
DIP THE EXTREMITY OF THE BLOOD COLLECTOR STRIP INTO THE WELL AND MIX GENTLY.

## STEP 5



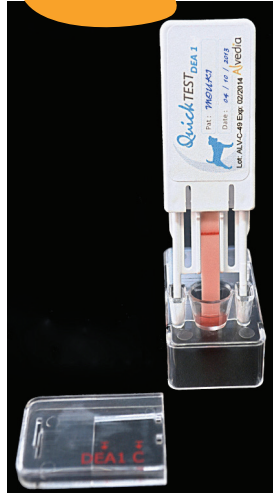
SEPARATE THE PLASTIC DEVICE IN TWO PARTS, BY PULLING OUT THE MEMBRANE HOLDER.

## STEP 6



INSERT THE LEGS OF THE MEMBRANE HOLDER INTO THE HOLES BESIDE THE WELL TO ALLOW THE MIGRATION.

## STEP 7



ALLOW TO STAND UNTIL THE BLOOD SUSPENSION IS SOAKED UP BY THE MEMBRANE AND THE CONTROL LINE BECOMES CLEARLY VISIBLE.

## STEP 8



FIX BACK THE PLASTIC PART IN ORDER TO READ THE RESULT.

SAME PROCEDURE FOR FELINE & CANINE BLOOD TYPING TEST

# QuickTEST<sub>BT</sub> RESULTS

DEA 1 -  
DOG



ABSENCE OF RED LINE IN FRONT OF «DEA 1» ARROW INDICATES A **NEGATIVE REACTION**.

DEA 1 WEAK +  
DOG



PRESENCE OF A **WEAK** RED LINE IN FRONT OF «DEA 1» ARROW INDICATES A **POSITIVE REACTION**. A WEAK DEA 1 POSITIVE DOG = DEA 1.2 POSITIVE DOG (SEE SCIENTIFIC INFORMATION)

DEA 1 +  
DOG



PRESENCE OF RED LINE IN FRONT OF «DEA 1» ARROW INDICATES A **POSITIVE REACTION**.

A GROUP  
CAT



PRESENCE OF RED LINE IN FRONT OF "A" ARROW INDICATES A **POSITIVE REACTION FOR A GROUP**.

B GROUP  
CAT



PRESENCE OF RED LINE IN FRONT OF "B" ARROW INDICATES A **POSITIVE REACTION FOR B GROUP**.

AB GROUP  
CAT



PRESENCE OF 2 RED LINES IN FRONT OF "A" AND "B" ARROW INDICATES A **POSITIVE REACTION FOR BOTH A AND B GROUP**.



# QuickTEST SCIENTIFIC INFORMATION

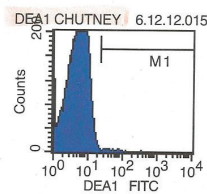
## THE DEA 1 ANTIGEN (NEW DATA)

ALVEDIA'S SCIENTIFIC TEAM ESTABLISHED THAT DEA 1 ANTIGEN PRESENTS A LARGE RANGE OF EXPRESSION LEVEL ON THE RBC SURFACE BY USING FLOW CYTOMETER TECHNOLOGY. SIMILARLY TO THE RHESUS D MOLECULE IN HUMAN (NAMED WEAK D OR DU), SOME DOGS EXPRESS LOW LEVEL OF DEA1 ANTIGEN (CALLED WEAK DEA 1). THIS WORK SHOWS THAT THE WEAK DEA 1 WERE PREVIOUSLY TYPED AS DEA 1.2 POSITIVE DOGS. A LARGE STUDY ON MORE THAN 750 DOGS SHOWS THAT OUR MEMBRANE TECHNOLOGY DETECTS PERFECTLY ALL RANGE OF DEA 1 ANTIGEN EXPRESSION FROM STRONG TO VERY WEAK. CONSEQUENTLY, THE DEA 1 LINE WILL ALWAYS SHOW DIFFERENT INTENSITIES. (PUBLICATION ON THAT SUBJECT COMING SOON).

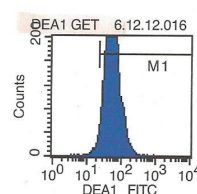
### FLOW CYTOMETER ANALYSIS RESULTS



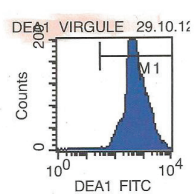
DEA 1 NEGATIVE



DEA 1 WEAK +



DEA 1 +



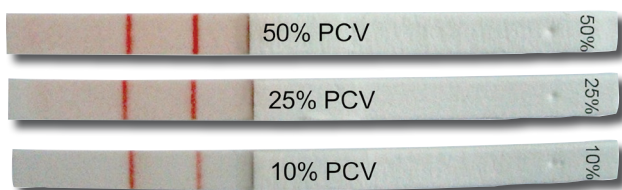
COMPARISON BETWEEN FLOW CYTOMETER ANALYSIS AND QUICK TESTS RESULTS IN ORDER TO CONFIRM THE RELIABILITY AND THE SPECIFICITY OF THE QUICK TEST TECHNOLOGY

## RELIABLE IN CASE OF AUTO-AGGLUTINATION

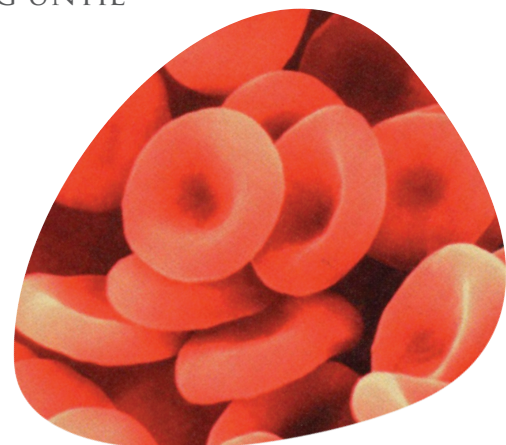


THANKS TO OUR SPECIFIC MEMBRANE TECHNOLOGY, THE AGGLUTINATED RED BLOOD CELLS WILL BE RETAINED AT THE BOTTOM OF THE MEMBRANE WHEREAS NON AGGLUTINATED RBC WILL CARRY ON MIGRATING UNTIL THE TOP OF THE MEMBRANE.

## RELIABLE IN CASE OF LOW PCV (ANEMIA)



THANKS TO THE SENSITIVITY OF OUR SPECIFIC MONOCLONAL ANTIBODIES, EVEN A LOW PCV WILL ALLOW YOU TO OBTAIN A RELIABLE BLOOD TYPING.



FOLLOWING THE EXAMPLE OF HUMAN SURGICAL AND MEDICAL PROGRESS, ACHIEVED THANKS TO TRANSFUSION, PROGRESS IN VETERINARY SURGERY AND MEDICINE IS GOING TO BE ACHIEVED THANKS TO AN EFFECTIVE AND RELIABLE QUICK TEST.

DETERMINING BLOOD TYPES REPRESENTS AN ESSENTIAL PROCESS IN ORDER TO ENSURE ANIMALS BENEFIT FROM TRANSFUSION SUPPORT. NOWADAYS, A DOG OR A CAT HAS A SIGNIFICANT PROBABILITY OF BEING TRANSFUSED ONCE OR MORE IN THEIR LIFETIME. BASIC BLOOD TYPING IS ESSENTIAL TO PERFORM THESE FIRST AND SUBSEQUENT TRANSFUSIONS AS SAFELY AS POSSIBLE.

THAT'S WHY **ALVEDIA** HAS FOCUSED RESEARCH ON A BETTER KNOWLEDGE OF BLOOD TYPING IN DOGS AND CATS. WE ARE NOW PROUD TO ENABLE THE VETERINARY COMMUNITY TO BENEFIT FROM ITS LATEST PROJECT BY PUTTING AT THEIR DISPOSAL TYPING SYSTEMS BASED ON AN INNOVATIVE IMMUNO-CHROMATOGRAPHY MEMBRANE. THESE SYSTEMS HAVE BEEN TRIALLED AND ARE NOW USED BY VETERINARY UNIVERSITIES AND VETERINARY PROFESSIONALS WORLDWIDE.



## IMPORTANCE OF BLOOD TYPING

TRANSFUSION HAS TAKEN AN INCREASINGLY IMPORTANT ROLE IN THE LIFE SUPPORT OF CANINE AND FELINE PATIENTS. THUS, THE NEED FOR QUICK AND ACCURATE BLOOD TYPING HAS NOW BEEN RECOGNIZED IN ORDER TO ASSURE SAFE AND EFFICIENT TRANSFUSION.

IT IS NOW ESSENTIAL TO PERFORM BLOOD TYPING TO SAVE ANIMAL LIVES IN CASE OF:

- ✧ TRAUMATIC SHOCK
- ✧ SURGICAL PROCEDURES
- ✧ IRON DEFICIENCY
- ✧ SPLEEN INJURY
- ✧ SEVERE BLEEDING AFTER DISEASES AND SHOCKS
- ✧ SOME INFECTIOUS DISEASES
- ✧ HYPOPROTEINEMIA
- ✧ SEVERE ANEMIA
- ✧ ACUTE HEMOLYSIS SYNDROME

### IN DOGS

THE DETERMINATION OF DEA 1 ANTIGEN IS STRONGLY RECOMMENDED BEFORE ANY BLOOD TRANSFUSION TO AVOID A POTENT ALLOANTIBODY RESPONSE AGAINST THIS ANTIGEN AND TO AVOID ACUTE HAEMOLYTIC TRANSFUSION REACTION.

### IN CATS

THE PRESENCE OF NATURALLY OCCURRING ALLO ANTIBODIES IN TYPE A AND IN TYPE B CATS REQUIRES THAT BLOOD TYPING MUST BE PERFORMED PRIOR TO BLOOD TRANSFUSION TO AVOID ACUTE HAEMOLYTIC TRANSFUSION REACTION, AND IN BREEDINGS TO PREVENT NEONATAL ISOERYTHROLYSIS. BLOOD CAN BE TAKEN DIRECTLY FROM THE UMBILICAL CORD.

# QuickTEST<sub>BT</sub> PACKAGING

THE QUICK TEST CAN BE ORDERED PER UNIT OR PER BOXES OF 20 QUICK TESTS. 1 QUICK TEST = 1 DETERMINATION.

CONTACT US TO IDENTIFY YOUR LOCAL DISTRIBUTOR



**Alvedia**  
Alice Veterinary Diagnostic

11-13 RUE DES AULNES  
69760 LIMONEST - FRANCE  
TEL: +33(0)478380239  
FAX: +33(0)478939563  
E-MAIL: [CONTACT@ALVEDIAVET.COM](mailto:CONTACT@ALVEDIAVET.COM)  
[WWW.ALVEDIA.COM](http://WWW.ALVEDIA.COM)

ALL YOU NEED FOR A SAFE TRANSFUSION

